



ARLENE GONNELLA
Sales Associate
Arlene's Cell: 201-306-1357

5 BEDROOM STUNNING COLONIAL

12 Miele Place || SUMMIT



Modern 5 bedroom, 4.1 bath, 3,772 sq ft Colonial with high ceilings, open floor plan concept and gorgeous coffered ceilings, moldings and central air! The gourmet eat-in kitchen features top of the line stainless steel designer appliances and opens up to a large family room with a gas fireplace, making the perfect open layout. The family room leads out to an outdoor patio and amazing private backyard, perfect for relaxing or entertaining! The master suite has a 12' coffered ceiling and 2 huge walk-in customized closets, as well as stunning moldings and terrific natural light from 3 large windows. The spa-like master bath features a large shower with marble bench & tile, as well as a large modern soaking tub with a picture window above it. There are 3 additional bedrooms on the 2nd level, one of which is en suite and additional hall bath as well as 2nd level laundry. The lower level features a large recreation room, a media room, second laundry room and a 5th bedroom with en suite bathroom that is an ideal in-law suite. This modern property also features an unfinished bonus room that can be easily converted into a 6th bedroom, with central air & heating, abundant natural light from a large window and plenty of closet and storage space. Conveniently located 0.5 miles off of major highways, and with a close proximity to New York City both by car (35-45 minute drive) and by train (35 train to Penn Station)! This stunning home is also in the incredible Summit school system, just ranked #4 in New Jersey by niche.com! With great natural light, terrific finishes, the perfect open floor plan and high ceilings, this contemporary Colonial shouldn't be missed!



















INCREDIBLE LOCATION & NEIGHBORHOOD AMENITIES

- In an amazing Summit school system, ranked #4 in the state of New Jersey by niche.com
- Close proximity to New York City, both by car (just 0.5 miles to major highways) or by train (35 minute express train to Penn Station)
- Just a few blocks from the Equinox Summit Gym
- Just 1.5 miles to the Short Hills Mall
- 5 bedrooms, 4.1 baths, 3,772 sq ft of living space and a large 3rd level bonus room that could be easily converted to a 6th bedroom with central air, heating, a large window and plenty of closet space

FIRST LEVEL

Foyer: picture and chair rail molding, gorgeous molding around archways, 2 coat closets, hardwood floors, recessed lights, Front door with sidelights.

Powder Room: marble countertop with Moen faucets, recessed lights, light fixtures, hardwood floors, Toto commode.

Living Room: coffered ceiling, 2 windows, picture and chair rail molding, gorgeous moldings around archway, 9' ceilings, hardwood floors.

Dining Room: coffered ceiling, 2 windows, picture and chair rail molding, gorgeous moldings around archway, 9' ceilings, hardwood floors.

Gourmet Eat-in Kitchen: large industrial kitchen exhaust hood over Bertazzoni range with 2 ovens, 6 gas burners and a griddle, pasta water faucet, tile backsplash, marble countertops and center island with a sink and room for 4 stools, white custom cabinetry, Liebherr refrigerator with 2 freezer drawers, Bosch dishwasher, Sharp microwave, large stainless steel sink in main counter area with Moen faucet and a picture window above the sink that overlooks the patio & gorgeous, level backyard.

Butler's Pantry: under counter wine fridge, Elkay sink with Moen faucet, tile backsplash, marble countertop, built-in white custom cabinetry, chair rail and picture molding, built-in shelves.

Family Room: totally open to the Gourmet Eat-in Kitchen: gas fireplace with wood mantel, recessed lights, 9' ceilings, hardwood floors, 2 windows and sliders with full side lights that lead out to patio and gorgeous, level backyard.

Den: window, hardwood floors, open to the family and living rooms.

Mudroom: off the kitchen and 2 steps up from the garage entrance.

SECOND LEVEL

Master Suite: 12' coffered ceilings with incredible architectural moldings, 2 huge walk-in customized closets - 1 with a window, recessed lights, hardwood floors, 3 large windows provide incredible natural light.

Spa-like Master Bath: large shower with marble bench, large soaking tub with a picture window above, 2 sinks over vanities with 2 light fixtures above, separate room with Toto commode.

Bedroom 2: 2 windows, double door customized closet, recessed light, hardwood floors.

Bedroom 3: 3 windows, double door customized closet, recessed lights, hardwood floors.

En Suite Bath: large stall shower, 3-light fixture over marble countertop with sink and Moen faucet, recessed lights, Toto commode, tile floor.

Bedroom 4: 2 windows, customized walk-in closet, recessed lights, hardwood floors.

Full Hall Bath: shower over tub with glass enclosure, large built-in mirror and 4-light fixture above 2 sinks set in Caesarstone countertops, separate Toto commode.

Conveniently Located 2nd Floor Laundry Room: cabinets.

THIRD LEVEL

Usable Bonus Room: can be easily converted into a 6th bedroom, with central air & heating, abundant natural light from a large window and plenty of closet and storage space.

LOWER LEVEL

Recreation Room: tile floor and recessed lights.

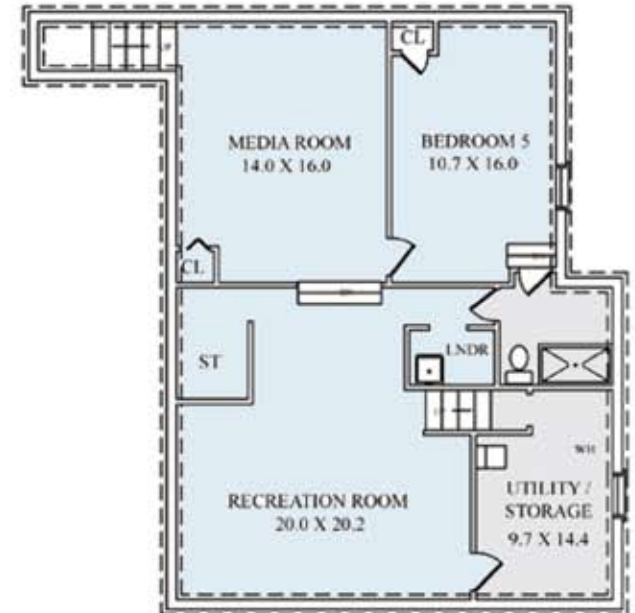
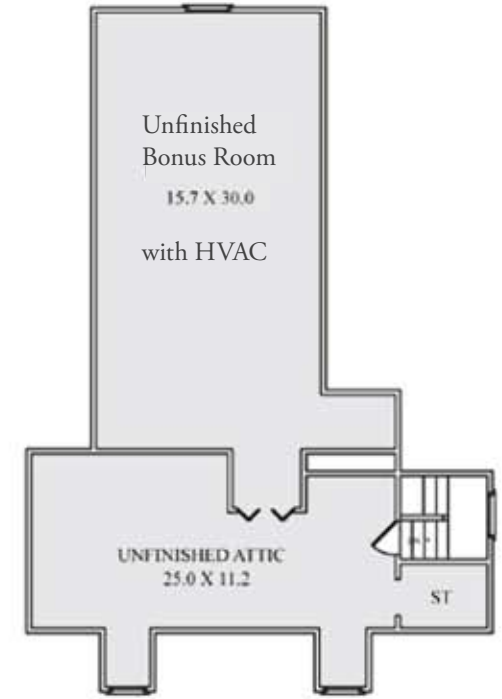
Media Room: 2 steps down from Recreation Room for more ceiling height, closet, stairwell to exterior door and garage.

Bedroom 5 - Ideal In-law Suite: closet, window providing legal egress, tile floor, recessed lights.

En Suite Bath: stall shower, sink over vanity with Moen faucet, tile floor, Toto commode, 2 doors for use as an en suite or full hall bath.







5 BEDROOMS
4.1 BATHS
PREMIUM FINISHES

NOT TO SCALE - This floor plan is provided for illustration purposes only.
 Room positions and dimensions are approximate and should be independently measured for accuracy







ARLENE GONNELLA

Sales Associate

#1 Agent Nationally for Weichert, Realtors for 12 years!

Top 100 Agents in USA by WSJ 2009-2017!

(c) 201.306.1357

(e) arlene@gonnellateam.com

gonnellaTeam.com



Weichert

REALTORS®

505 Millburn Avenue • Short Hills • 973.376.4545 • weichert.com

 Like The Gonnella Team  Follow @GonnellaTeam



© 2018 Weichert, Realtors®. If your home is currently listed with a real estate broker, this is not intended to be a solicitation of the listing. Each WEICHERT® franchised office is independently owned and operated. Weichert® is a federally registered trademark owned by Weichert Co. All other trademarks are the property of their respective owners. REALTOR® is a federally registered collective membership mark which identifies a real estate professional who is a Member of the NATIONAL ASSOCIATION OF REALTORS® and subscribes to its strict Code of Ethics. All square footage, room dimensions, and lot sizes are approximate. Offering subject to errors, omissions, prior sale, change of price, or withdrawal without notice. The information herein is provided by the seller, and not Weichert, Realtors, and while deemed reliable, is not guaranteed.