



Arlene Gonnella
Sales Associate
(c) 201.306.1357

26 Woodcrest Avenue || SHORT HILLS

Mint condition custom built all brick center hall colonial, designed by Michael Bazala AIA for current owners (who is a well-respected New York and New Jersey real estate developer) to the highest specifications possible, with every amenity ideally located on .54 acres of property on a private road backing up to the 2,000+ acre South Mountain Reservation! The grand two-story entrance hall invites you into this incredible home. The living and family rooms both have gas fireplaces, and the family room has sliders that open to the beautiful bluestone and brick patio and stunning, professionally landscaped property. The gourmet eat-in kitchen features state of the art appliances including those by Viking & Miele, and has sliding glass doors that open to the patio & backyard. There is a 1st level in-law suite. The luxurious master suite on the second floor features a gas fireplace with marble surround, 2 walk-in closets and a spa-like master bath. Three more bedrooms, two additional baths and a laundry room complete the second floor. This all brick 5 bedroom home also features amenities like a whole house generator powered by natural gas, circular driveway, 9' ceilings on both the 1st and 2nd levels and attached 3-car oversized garage with 9' wide doors! The property offers great privacy, backing up to the South Mountain Reservation. The home is located in the highly rated Deerfield Elementary School district. It is walking distance to the Millburn Train Station (.6 miles), the Paper Mill Playhouse and downtown Millburn. Bus service available to Deerfield Elementary School, Millburn Middle School and High School, all perennially ranked among the top in the country!





















FIRST LEVEL

Grand Two-story 20' high Entrance Hall: with brass chandelier, recessed lights, beautiful dentil molding, hardwood floor in herringbone pattern and 2 closets.

Living Room: with gas fireplace with marble surround, 2 brass sconces, dental molding, 3 windows, recessed lights, sound system speakers, and a special bordered hardwood floor.

Dining Room: with brass chandelier, 2 sconces, 3 windows, chair rail, dental molding, hardwood floor with special borders and sound system speakers.

Family Room: with gas-starter fireplace with a floor to ceiling stone surround, recessed lights, sound system speakers, carpet, cherry-wood built-in entertainment center with large screen Sony TV and bar refrigerator, low voltage lights, sliders open to the rear patio.

Gourmet Eat-in Kitchen: Perimeter and center island with granite countertops and two Kohler sinks, each with GE waste disposals, GE Monogram 48" side by side refrigerator/freezer with automatic ice dispenser, Viking Professional exhaust over 48" Viking Professional 6 burner gas range with griddle, GE Monogram microwave, Miele dishwasher, custom-painted tile backsplash, sound system speakers, hardwood floors, low voltage and recessed lights, chandelier over the eating area, sliding glass doors open to the expansive bluestone and brick patio.

Exercise Room/In-law Suite/Children's Playroom: carpet, recessed lights, mirrored wall, speakers for sound system, closet, window, sliding glass doors open to expansive bluestone and brick patio. Gorgeous **EnSuite Full Bath:** with shower with handheld sprayer, floor to ceiling tile and window, wall mounted light above mirrored medicine cabinet.

Powder Room: with mirror flanked by 2 sconces, dental molding and custom limestone floor.

Rear Patio: bluestone and brick patios, 6 burner Weber BBQ Grill with direct natural gas connection, outdoor sound system speakers. Professionally landscaped and maintained.

SECOND LEVEL

Master Bedroom: with 3 windows with Hunter Douglas shades and custom drapery, gas fireplace with marble surround, dental molding, recessed lights, 2 swing arm lamps over bed, sound system speakers, 2 walk-in closets.

Luxurious Spa-like Master Bath: with Jacuzzi, triple Roborn medicine cabinet over double sinks set in marble countertops, shower with handheld sprayer and glass block window, 3 windows with Hunter Douglas shades, linen closet, sound system speakers.

Bedroom #2: with carpet, recessed lighting, sound system speakers, double closet and single closet, 3 windows with Hunter Douglas shades.

Bedroom #3: with double closet and single closet, recessed lighting, carpet, 2 windows with blinds.

Full Bath: with shower, floor to ceiling tile, mirrored wall with sconces over double sink set in corian countertops. Jack and Jill between Bedrooms 2 and 3.

Bedroom #4: with 2 windows with blinds, double closet, recessed light, carpet. **En Suite Bath:** with shower over tub, floor to ceiling tile, Laufen ceramic sink set in corian countertop, window with blinds.

Laundry Room: GE washer and dryer, tile floor.

Bessler stairs to attic

LOWER LEVEL

Partially Finished Basement: with high ceilings, heat and air-conditioned, powder room, potential wine cellar, attached 3 car, oversized garage with 9' wide doors.

INCLUSIONS

All lighting fixtures, window treatments, sound equipment, BBQ and built-ins

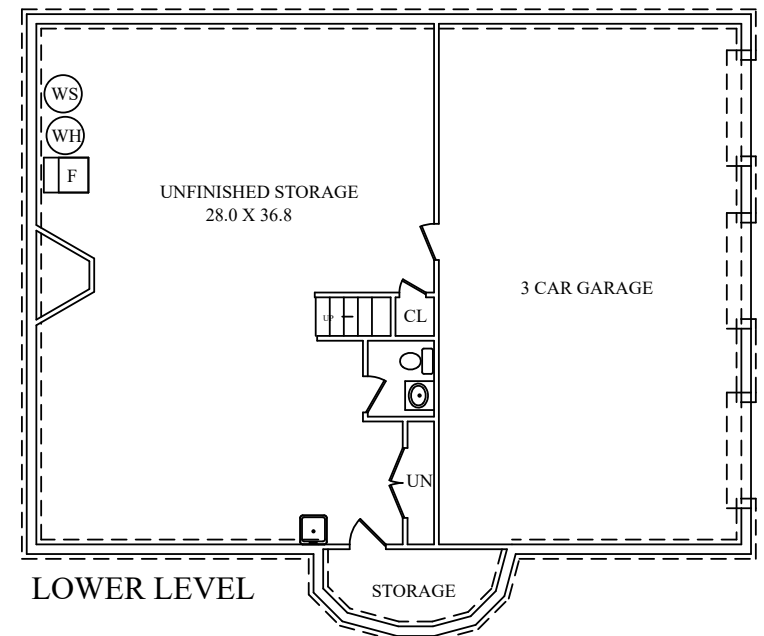
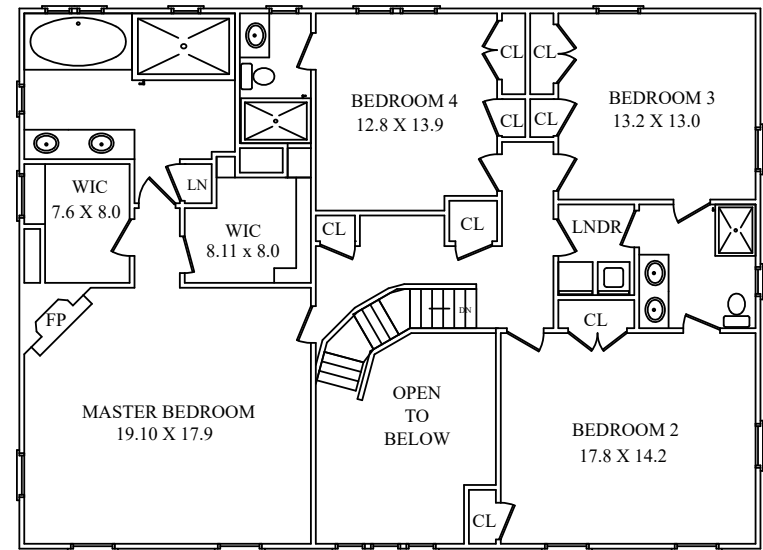
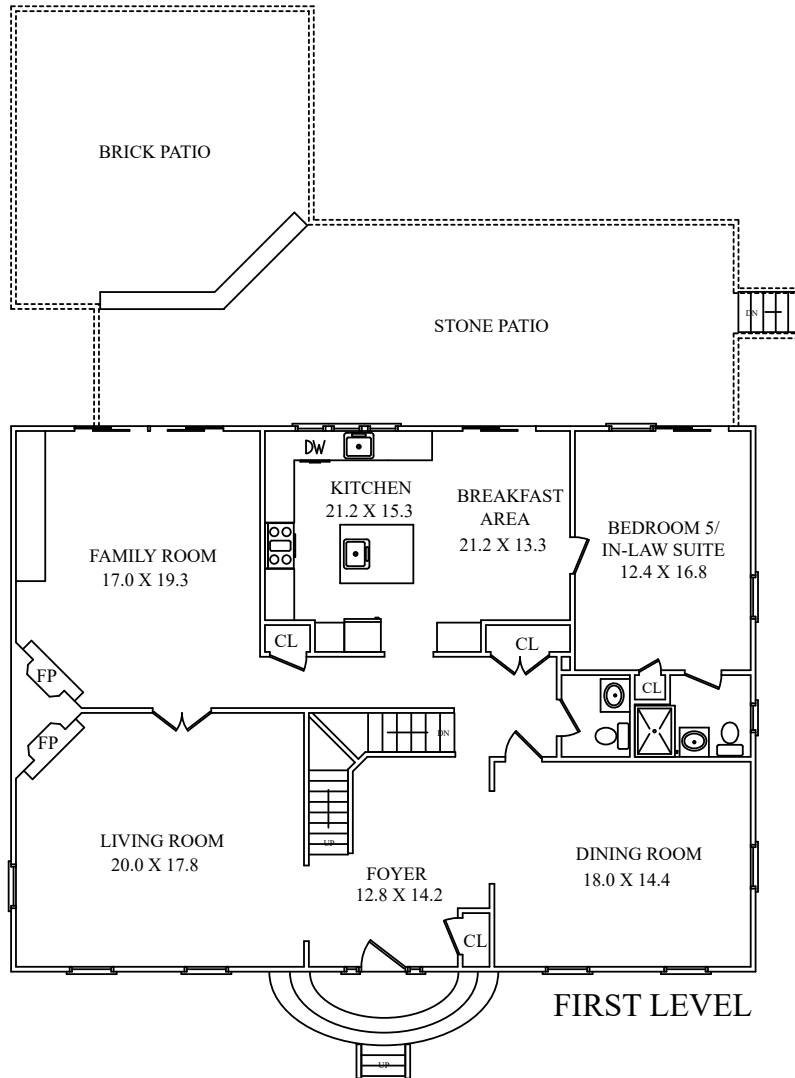
AMENITIES

- Custom built, total solid brick colonial
- Designed by Michael Bazala AIA
- 3 fireplaces, all with gas starters
- Whole house Generac natural gas generator
- 9' ceilings on both the 1st and 2nd levels
- Solid 1 ¾" interior doors
- Marvin windows with transoms
- French drains
- Circular driveway
- Panasonic phone system with intercom
- Honeywell Intrusion and Fire Alarm system with cellular backup
- Hoover central vacuum
- 6 zone underground sprinkler system
- Two Natural Gas Carrier furnaces with AprilAire electronic air cleaners and dehumidifiers
- Rheem 75 gallon gas hot water heater
- Water softener
- Silent floors
- Internet connected Honeywell thermostats
- Master bedroom double sound insulated
- Second level floor plan eliminates shared demising walls between all bedrooms to minimize noise transmission
- 200 amp underground service
- Meticulously maintained
- All furniture available

THE FLOOR PLAN

26 Woodcrest Avenue

Short Hills, New Jersey



NOT TO SCALE - This floor plan is provided for illustration purposes only.
Room positions and dimensions are approximate and should be independently measured for accuracy







ARLENE GONNELLA

Sales Associate

- #1 Agent in Millburn/Short Hills for 13 years, including 2018!
- #1 Agent in Essex County for 9 years, including 2018!
- #1 Agent Nationally at Weichert, Realtors for 13 years, including 2018!
- #1 Agents in New Jersey in 2018!
- (c) 973.376.4545
- (c) 201.306.1357
- (e) arlene@gonnellateam.com
- (w) GonnellaTeam.com

Weichert

REALTORS®



Gonnella
TEAM



Like The Gonnella Team



Follow @GonnellaTeam

SHORT HILLS SALES OFFICE • 505 MILLBURN AVENUE • SHORT HILLS



© 2019 Weichert, Realtors®. If your home is currently listed with a real estate broker, this is not intended to be a solicitation of the listing. Each WEICHERT® franchised office is independently owned and operated. Weichert® is a federally registered trademark owned by Weichert Co. All other trademarks are the property of their respective owners. REALTOR® is a federally registered collective membership mark which identifies a real estate professional who is a Member of the NATIONAL ASSOCIATION OF REALTORS® and subscribes to its strict Code of Ethics. All square footage, room dimensions, and lot sizes are approximate. Offering subject to errors, omissions, prior sale, change of price, or withdrawal without notice. The information herein is provided by the seller, and not Weichert, Realtors, and while deemed reliable, is not guaranteed.