



22
CAMBRIDGE



22 Cambridge Drive

Mint condition 5 bedroom, 3.1 Bath Colonial ideally located walking distance to Hartshorn Elementary School (.3 miles) and just 1 mile to the Short Hills Train Station. Gracious foyer with curved staircase flanked by spacious living room with wood-burning fireplace and sun-soaked dining room with beautiful bay window with view of the huge, totally level side lawn. The new gourmet eat-in kitchen features white designer cabinetry, large center Island with 2 light fixtures above, quartz countertops, Wolf 6-burner gas range with Professional exhaust, Subzero refrigerator/freezer, hardwood floors and great natural light, completely open to the relaxing family room with a pair of French doors open to a stunning bluestone patio and spacious level side yard. Another pair of French doors open to the Living Room, which leads to the fabulous wood-paneled library with gas fireplace flanked by built-in bookcases and storage, a vaulted ceiling and a gorgeous Palladium window. Glass pocket doors open to the amazing work from home office with desk, built-ins and 4 new windows providing great natural light. The new mudroom/laundry room is beautiful & very convenient, with easy access to attached 2-car garage. The second level features 5 bedrooms and 3 full baths including a stunning master suite with cathedral ceiling, incredible closet space and a spa-like master bath. The lower level features a recreation room, office/media room and storage.



Entrance Hall with coat closet, lighting fixture and recessed lights.

◀ **Living room** with wood burning fireplace, recessed lights, hardwood floor, pair of French Doors open to family room, 1 window.

▶ **Dining Room:** with chandelier, chair rail with molding beneath, beautiful bay windows with view of side lawn.

▶ **New Powder Room** with pedestal sink, Toto commode, recessed light over windows.



Kitchen



▲ *Gourmet eat-in kitchen* : with white designer cabinetry, white quartz countertop, 2 lighting fixtures over center island, WOLF 6 burner gas range with Professional Exhaust, 3 Pella windows over stainless steel sink with in-sinkerator, recessed light, speakers for sound system, Sharp microwave, Bosch dishwasher, Subzero refrigerator/freezer, hardwood floors, 5 new Pella windows provide great natural light to eating area with light fixture, window seat with custom cushions.

Family Room



▲ Totally open to *Family Room* , wired for flatscreen, double closet, pair of French Doors open to bluestone patio, recessed lighting.







◀ ▲ Wood paneled *Library* with gas fireplace flanked by built-in bookcases and storage, 10' high tray ceiling with beams, recessed lighting, speakers for surround system, gorgeous Palladium window, glass pocket doors open to home office.



▲ Amazing Work from *Home Office* with desk and built-ins, recessed lighting, 4 new windows providing terrific natural light.

▶ Glass French Door opens to *Laundry Room/Mud* room with tile floor, built-ins with quartz countertop, cubbies, new Pella window, Maytag washer and dryer, easy access to attached 2 car garage with epoxy floor.



Master Suite





▲ *Master Bedroom*: with high ceiling, recessed lighting, wired for lighting fixture, carpet, 4 new Pella windows with blinds, 2 double closets, window seat with storage, dressing area with closet, additional double closet and window seat with storage beneath.

▲ *Spa-like Master Bath*: sink set in custom vanity, shower with body spray, tumbled marble floor and walls, commode.



▲ *Bedroom 2* with carpet, lighting fixture, recessed lighting with dimmer, double closet and single closet, 3 windows with blinds.



▲ *Bedroom 3:* with 3 windows with blinds, recessed lighting with dimmer, hardwood floors, double closet.



▲ *Jack & Jill Bathroom* with shower, sink set in corian over vanity, window, Toto commode.



▲ **Bedroom 4** with 3 windows with blinds, recessed lighting with dimmers, single closet, hardwood floors.



▲ **Bedroom 5** with 2 windows with blinds, recessed lights with dimmer, chair rail, hardwood floors, double closet.



▲ **Hall Bath** with sink set in corian, commode, shower over tub.

2 Linen closets

Bessler stairs to Attic



Lower Level

◀ *Recreation room* with carpet, wired for flatscreen with speakers for surround sound, recessed lighting.

Double closet

Office #1 with carpet, recessed lighting.

Office #2/storage room

Plumbed for Half Bath

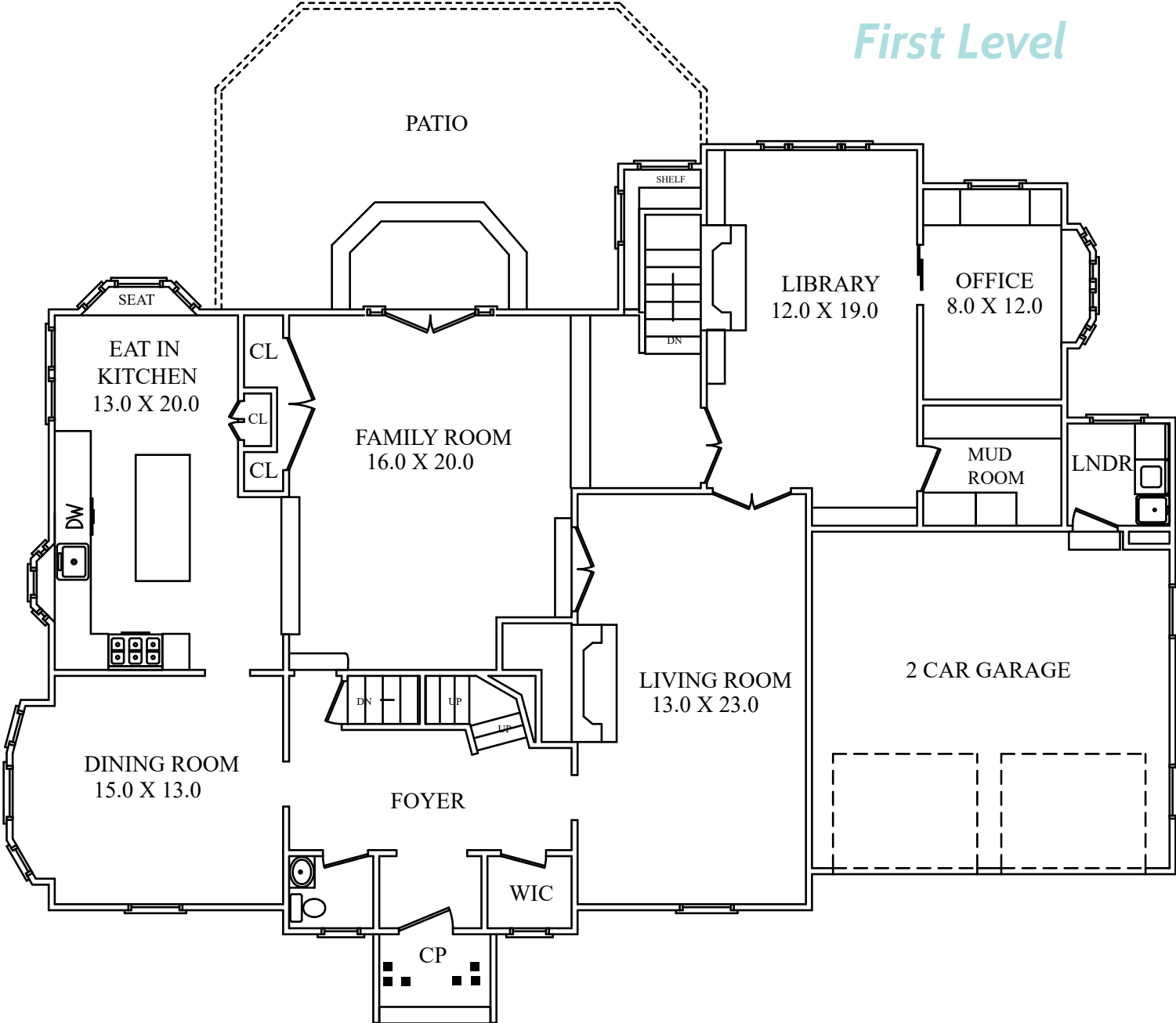
Stairs to outside

Amenities

- Expansive Bluestone Patio
- State of the Art Alarm System
- Water Softener
- Trano Gas Furnace
- Bradford White Gas Hot Water Heater 2015
- 2 zone air conditioner
- Hunter underground sprinkler system
- Exterior painted

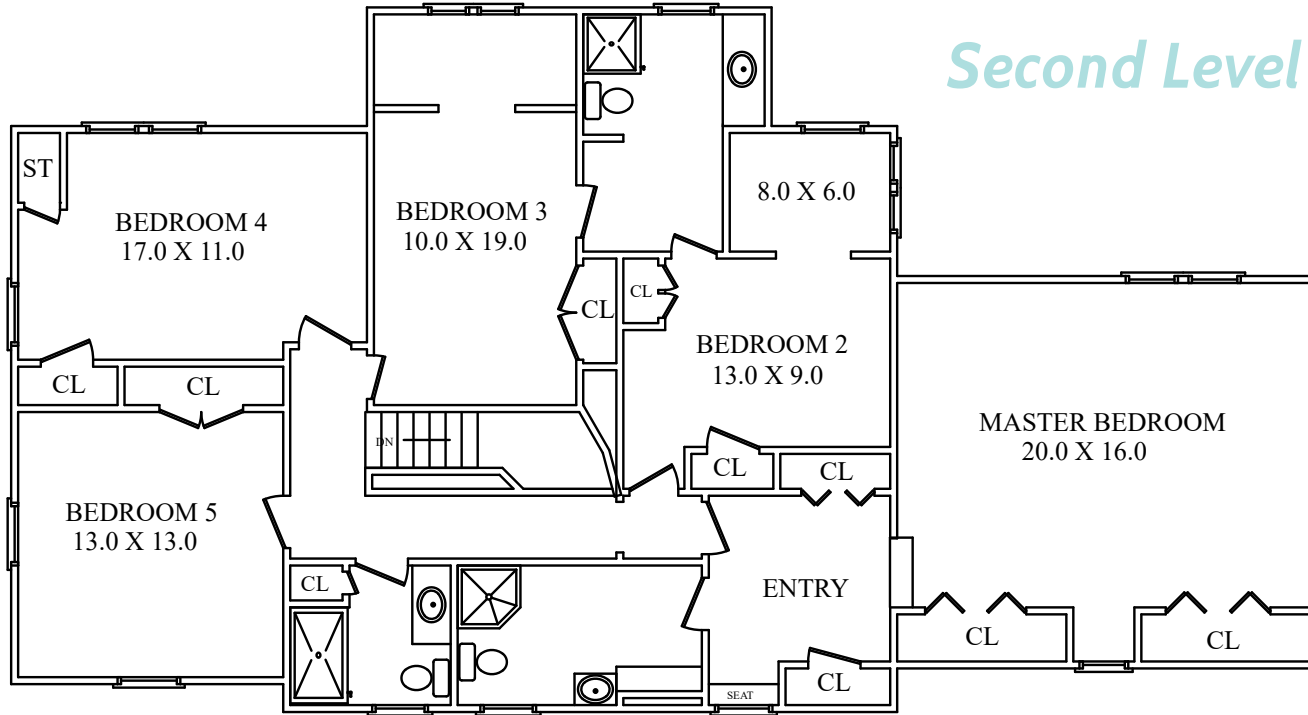
Floor Plans

First Level

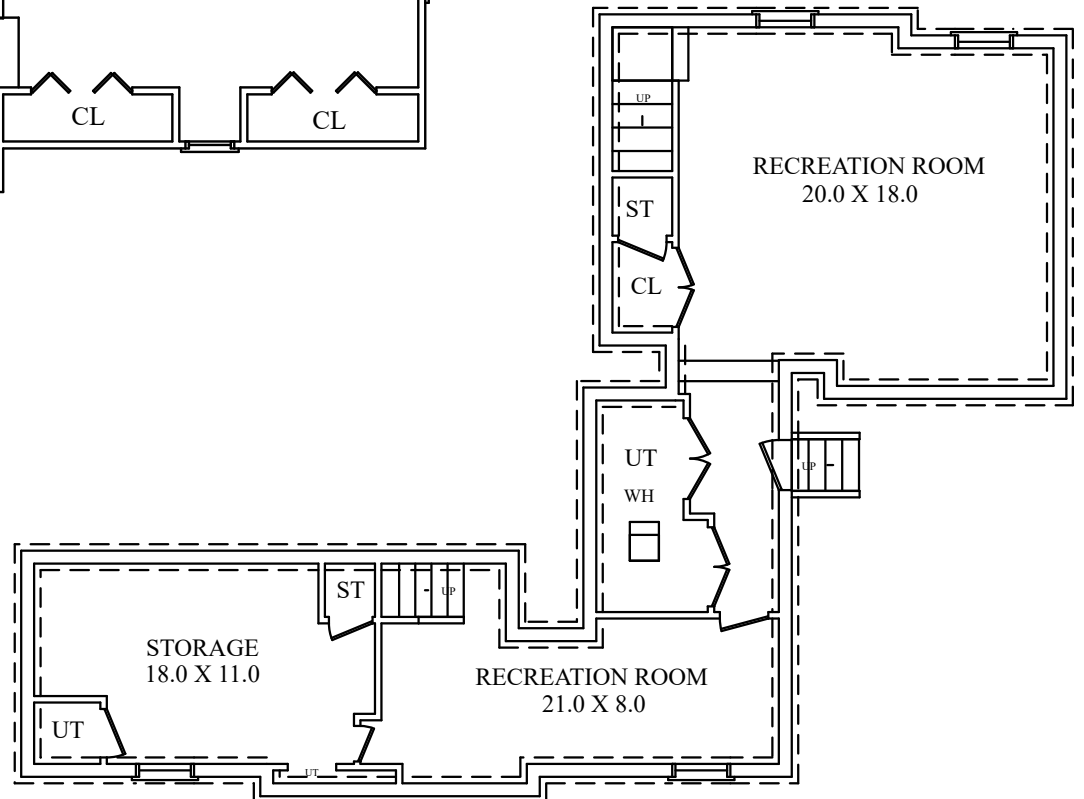


Floor Plans

Second Level



Lower Level





ARLENE GONNELLA
Sales Associate

- #1 Agent in Millburn/Short Hills for 14 years, including 2019**
- #1 Agent in Essex County for 10 years, including 2019**
- #1 Agent for Weichert Realtors for 14 years, including 2019**

Short Hills Sales Office

Office: 973-467-7576
Arlene's Cell: 201-306-1357
arlene@gonnellateam.com
www.GonnellaTeam.com



©2015 Weichert, Realtors®. If your home is currently listed with a real estate broker, this is not intended to be a solicitation of the listing. Each WEICHERT® franchised office is independently owned and operated. Weichert® is a federally registered trademark owned by Weichert Co. All other trademarks are the property of their respective owners. REALTOR® is a federally registered collective membership mark which identifies a real estate professional who is a Member of the NATIONAL ASSOCIATION OF REALTORS® and subscribes to its strict Code of Ethics. Seller reserves the right to make changes/alterations to the specifications included within this brochure/listing without notice. All dimensions are approximate, windows and door locations, size, quantity are subject to field variations. The information contained in this brochure is deemed reliable and accurate at time of press, however, needs to be verified by the Buyer. Weichert, Realtors and agents acting on their behalf for the purpose of creating this brochure are not responsible for typographical errors, misprints or misrepresentations are therefore held totally harmless. This listing is subject to price changes and/or withdrawn without prior notice.

