



5 Pine Valley Way || FLORHAM PARK



Majestic all brick Estate on totally level, very private 2 acre lot ideally located on a cul de sac with a gated entrance. Incredible features including soaring 10' ceilings on 1st floor, 9' ceilings on 2nd floor, grand entrance hall, massive great room with 2-story ceilings and gas fireplace, gorgeous formal dining room, gourmet eat-in kitchen with center island and top of the line stainless steel appliances, 1st level in-law suite with its own living room, incredible master suite with dressing room, 4 WICs, bedroom with high ceilings and gas fireplace, and spa-like master bath. Second level has 4 additional bedrooms, all with walk-in closets and en suite baths. Lower Level has wine cellar, 2nd kitchen, sauna, exercise room, 7th bedroom and bath, wet bar in recreation room, and walk-out access. Incredible patio with tile floor, cement railings and gorgeous stairway to backyard. Gated entrance to paver block circular driveway and attached 4-car garage.



















FIRST LEVEL

Grand Entrance Hall: stunning double glass Front door with sidelights and a crescent window opens to the 2-Story Grand Entrance Hall with hanging light fixture, high ceilings, marble tile floor and coat closet.

Great Room: Grand 2-story ceiling, gas fireplace with marble mantel and surround, hardwood floor, recessed lights, 4 sliding doors to the patio, built-in sinks with corona countertops, custom cabinetry, compact fridge & ice maker.

Gourmet Eat-in Kitchen: Industrial 6 burner gas range with 2 Garland ovens, large industrial Kitchen Exhaust hood, Subzero refrigerator, 2 center islands - one with a sink and one with an additional gas cooktop, Corian countertops, Miele dishwasher, tile backsplash, custom cabinetry, tile floor, recessed lights.

Breakfast Area: incredible natural light from 6 windows and 2 sliding doors, all with crescent windows above, tile floor, incredible views of the property.

Butler's Pantry: sink, Corian countertop, custom cabinetry, dishwasher, wine refrigerator.

Dining Room: built-in china cabinets, recessed lights, marble tile floor, 4 windows, ceiling & chairs rail molding.

Living Room: 2 steps down to the living room, with sliding doors to the patio with 4 windows providing great natural light, recessed lights, 10' ceilings, and a double door to the office.

Office: gas fireplace, 3 windows with blinds, glass door to Living Room, built-in shelves and cabinets, paneled walls, hardwood floor, recessed lights.

Powder Room: marble tile floor, 2 sconces, pedestal sink, ceiling fixture, oval window, commode.

In-law Suite: marble tile floor, sliding door with crescent windows above and blinds, recessed lights, custom walk-in closet.

In-law Suite Living Room: with sliding doors and crescent windows above, marble tile floor, recessed lights, double door closet.

In-law Suite En Suite Bath: mirror over 2 sinks set in marble countertop over vanity, stall shower, tile floor, tile half wall, window, Kohler commode.

SECOND LEVEL

Master Bedroom: gas fireplace, high ceilings, recessed lights, Bay windows with blinds, 2 additional windows with blinds, wall to wall carpet, 4 customized walk-in closets and a linen closet.

Master Dressing Room with built-in mirror, sink in vanity, desk, wall to wall carpet.

Spa-like Master Bath: Jacuzzi tub, stall shower, marble tile and half wall, 2 windows, mirror over 2 sinks set in marble countertop over vanity, 4 light fixtures, recessed lights, separate commode.

Bedroom 2: bay window, recessed lights, 2 walk-in custom closets.

En Suite Bath: shower over tub, mirror over sink over vanity, tile floor.

Bedroom 3: gas fireplace, 10 windows with blinds, cathedral ceiling with ceiling light fixture, wall to wall carpeting, walk-in closet.

En Suite Bath: mirror over cosmetic desk, stall shower, pedestal sink, tile floor, commode.

Bedroom 4: 3 windows, wall to wall carpeting, recessed lights, large custom walk-in closet, custom built-ins.

En Suite Bath: stall shower, tile floor, mirror over sink over vanity, 3 light sconce, Kohler commode, linen closet.

Bedroom 5: bay window, wall to wall carpeting, recessed lights, custom walk-in closet, TV hookup, mirror over built-in desk.

En Suite Bath: shower over tub, mirror over sink over vanity, tile floor, window, Kohler commode, linen closet.

THIRD LEVEL

Bonus Room: 2-Story Ceilings, mural painting on the walls and ceiling.

LOWER LEVEL

Recreation Room: gas fireplace with stone surround and wall, wall to wall carpeting, 3 sliding doors to property (walkout), recessed lights, ceiling fan.

Wet Bar: sink, built-in glass shelves, ice maker and compact refrigerator.

Game Room: 2 windows with blinds, sliding doors, wall to wall carpeting.

Amazing Second Kitchen: center island with sink, 4 burner electric cooktop, Subzero refrigerator, double wall oven, Baker's Pride Pizza Oven in beautiful brick wall, recessed lights, tile floor, 6 windows and sliding doors to the backyard.

Exercise Room: 3 mirrored walls, wall to wall carpeting, recessed lights, 3 TV hookups, sliding doors to the backyard. There's a sauna right next to the exercise room as well, perfect for your home workout routine!

Full Bath, Next to Exercise Room: stall shower, sink over vanity, tile floor, commode.

Wine Cellar: brick walls, 400 bottle clay holders, recessed lights, tile floor.

Bedroom 7: 2 windows, wall to wall carpeting, recessed lights, walk-in closet.

En Suite Bath: shower over tub, mirror over sink over vanity, 3 light sconce, tile floor, commode.

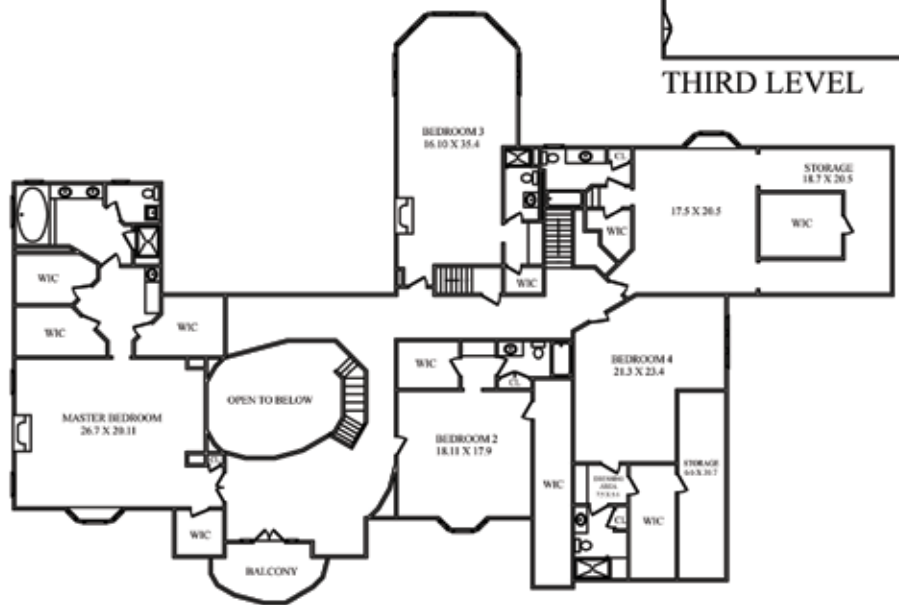
AMENITIES

- 2 Acres of Totally Level Property
- Beautiful Gazebo in Stunning Backyard
- Incredible Patio off of the 1st Floor
- 4-Car Attached Garage, 2 Steps up to the 1st Floor
- Gated Entrance to Driveway
- Paver Block Driveway
- Totally Fenced Property
- Exercise Room, Sauna & Wine Cellar in Lower Level
- Second Kitchen in Lower Level with Pizza Oven in Brick Wall

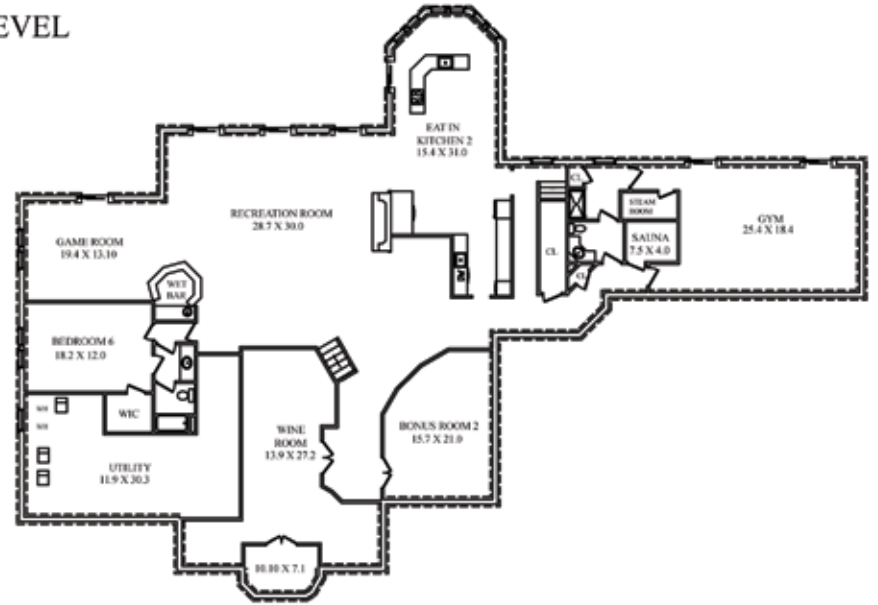




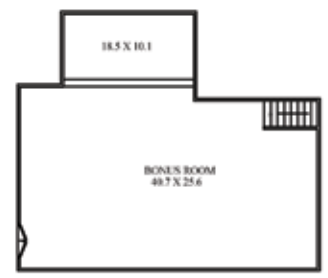
FIRST LEVEL



SECOND LEVEL

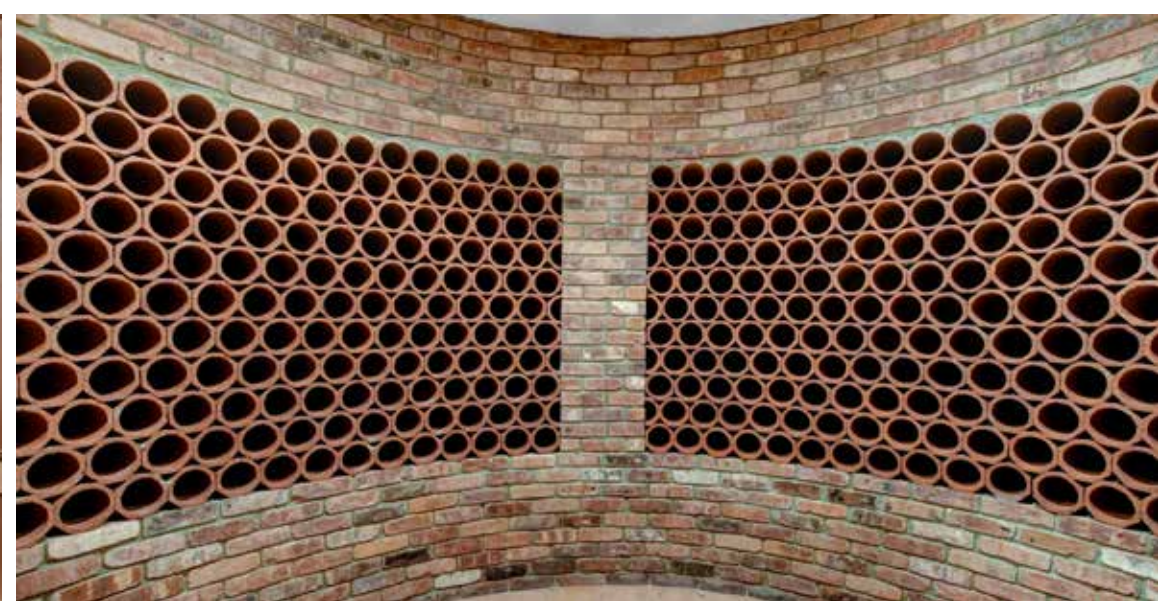


LOWER LEVEL



THIRD LEVEL

NOT TO SCALE - This floor plan is provided for illustration purposes only. Room positions and dimensions are approximate and should be independently measured for accuracy





Arlene Gonnella

Sales Associate

#1 Agents on the Midtown Direct Train Line in 2018 by sales volume!

#1 Agents in Essex County for 9 years, including 2018!

#1 Agents Nationally at Weichert, Realtors for 13 years, including 2018!

(c) 201.306.1357

arlene@gonnellateam.com

GonnellaTeam.com



Like The Gonnella Team



Follow @GonnellaTeam

Short Hills Sales Office • 505 Millburn Avenue • Short Hills • 973.376.4545

Weichert
REALTORS®

Gonnella
TEAM



© 2019 Weichert, Realtors®. If your home is currently listed with a real estate broker, this is not intended to be a solicitation of the listing. Each WEICHERT® franchised office is independently owned and operated. Weichert® is a federally registered trademark owned by Weichert Co. All other trademarks are the property of their respective owners. REALTOR® is a federally registered collective membership mark which identifies a real estate professional who is a Member of the NATIONAL ASSOCIATION OF REALTORS® and subscribes to its strict Code of Ethics. All square footage, room dimensions, and lot sizes are approximate. Offering subject to errors, omissions, prior sale, change of price, or withdrawal without notice. The information herein is provided by the seller, and not Weichert, Realtors, and while deemed reliable, is not guaranteed.