



84 MOUNTAIN AVENUE | MILLBURN

Be prepared to fall in love with this wonderful south facing, incredible natural light filled mint condition Colonial in an ideal location, walking distance to everything Millburn has to offer, including top schools, the train station, Taylor Park, South Mountain Reservation and both Downtown Millburn & Maplewood. This stunning home features 5 bedrooms and 2 full baths (one new in 2022), a stunning new gourmet eat-in kitchen (2019) with vaulted ceiling, designer cabinetry with under cabinet lighting, quartz countertops, high end stainless steel appliances, all new Andersen thermal windows, with access to spacious deck with great views and deep backyard, living room with wood-burning fireplace and dining room, sunroom or home office with 3 exposures and new powder room (2019). Luxurious Primary bedroom with 2 walk-in closets and a gorgeous new spa-like bath (2022) with double sinks set in custom vanity, shower over tub and new Andersen thermal window. 2 more bright & spacious bedrooms on 2nd floor, and a bedroom on the 3rd floor with access to attic. Walkout lower level has large recreation room with new Andersen thermal windows, new full bath and laundry. Since there is a legal egress there can be a 5th bedroom. The home has spectacular NYC skyline views! Ideally located on a quiet street walking distance to Wyoming Elementary School (just 0.4 miles), the Millburn Train Station (1.2 miles), downtown Millburn, Taylor Park & the Millburn Library (all 1.3 miles) and also just 0.7 miles to vibrant downtown Maplewood! The home features a newer roof, furnace and many new thermal windows! Just move in and enjoy!



























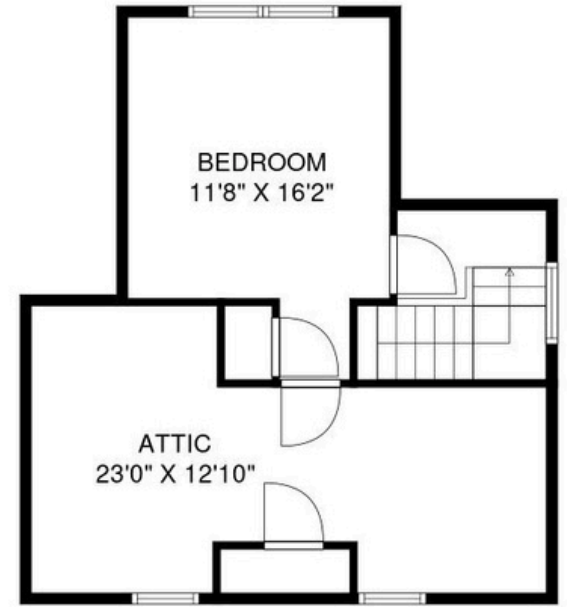




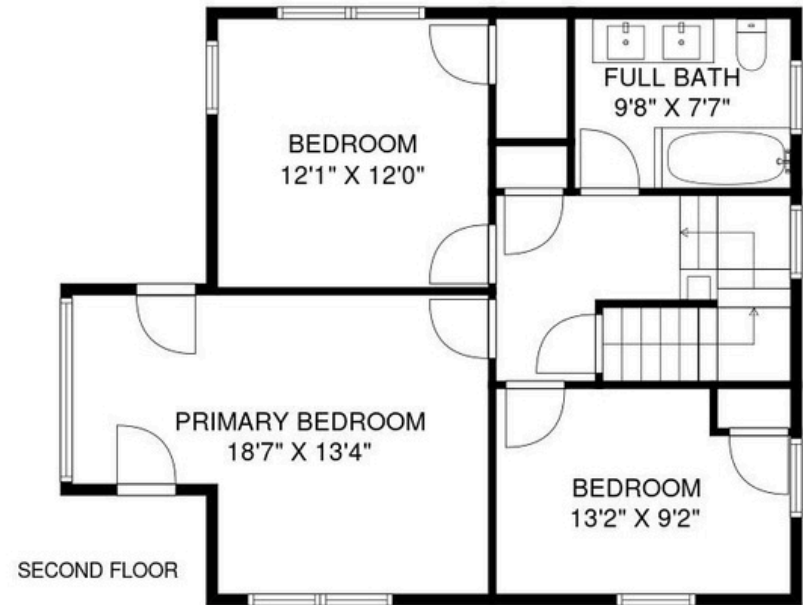
LOWER LEVEL



FIRST FLOOR



THIRD FLOOR



SECOND FLOOR

## **First Level**

Entrance Hall: 2 closets, 1 window.

Huge Living Room: wood-burning fireplace with traditional wood mantel and 2 Andersen thermal windows, recessed lights, hardwood floors.

Dining Room: new Andersen thermal windows, recessed lights, hardwood floors.

Pair of French Doors open to Sunroom / Home Office: recessed lights, great natural light from 5 new Andersen thermal windows from 3 exposures, carpet.

New Stunning Gourmet Eat-in Kitchen & Addition with vaulted ceiling (2019): designer cabinetry with under cabinet lighting and pullout drawers, 3 hanging light fixtures over breakfast bar peninsula with white quartz countertops, Professional exhaust vented outside over Verona 5 burner stainless steel range, KitchenAid refrigerator/freezer, GE Microwave, sink with instant hot water, Bosch dishwasher, under counter refrigerator, all new Andersen windows, new French door provides access to spacious deck with great views of the property.

New Powder Room (2019).

## **Second Level**

Luxurious Primary Bedroom: 5 windows, 2 walk-in closets, hardwood floors.

New Spa-like Primary Bath (2022): mirror and 2 sconces over double sinks set in custom vanity, Toto commode, shower over tub, tile floor, new Andersen thermal window.

Bedroom 2: 2 windows, closet, ceiling fixture, hardwood floors.

Bedroom 3: 3 windows, closet, ceiling fixture, hardwood floors.

Linen Closet

## **Third Level**

Bedroom 4: 2 windows, ceiling fixture, deep closet, hardwood floors, access to floored attic.

## **Beautifully Finished Walkout Lower Level**

Recreation Room: potentially 5th bedroom with legal egress walkout to huge backyard, electric baseboard heat.

Full Bath

Laundry Room: tile floor, washer/dryer and utility sink.

## **Amenities & Improvements**

New Gourmet Eat-in Kitchen & Addition (2019)

2 Full Baths - Spa-like Primary Bath just done in 2022

New Powder Room (2019)

New 50 gallon Bradford White gas hot water heater (2019)

New Furnace (2013)

New Andersen thermal windows & doors in living room, office/sunroom, kitchen, dining room, spa-like primary bath and lower level

New 30 year asphalt roof (2008)

Ideal location walking distance to everything: Just a 0.4 mile walk to Wyoming Elementary School, 0.7 miles to downtown Maplewood, 1.2 miles to the Millburn Train Station, 1.3 miles to downtown Millburn, 1.3 miles to beautiful Taylor Park, which has Youth Baseball Fields, Tennis & Basketball Court, 1.3 miles to the Millburn Public Library & South Mountain Reservation for beautiful hiking, 1.5 miles to Millburn Middle School, 1.5 miles to the Papermill Playhouse, 1.7 miles to Millburn High School











## Arlene Gonnella

*Sales Associate*

**#1 Agents in Millburn/Short Hills for 18 years, including 2023!**

**#1 Agents at Weichert Realtors for 18 years, including 2023!**

**#1 Agents in Essex County for 12 years!**

**#1 Agents in New Jersey, Among Large Teams, with \$229m in 2020 sales per Real Trends & #30 in the entire USA!**

201.306.1357

arlene@gonnellateam.com

GonnellaTeam.com



**Short Hills Office**  
505 Millburn Avenue · Short Hills, NJ 07078  
973.376.4545